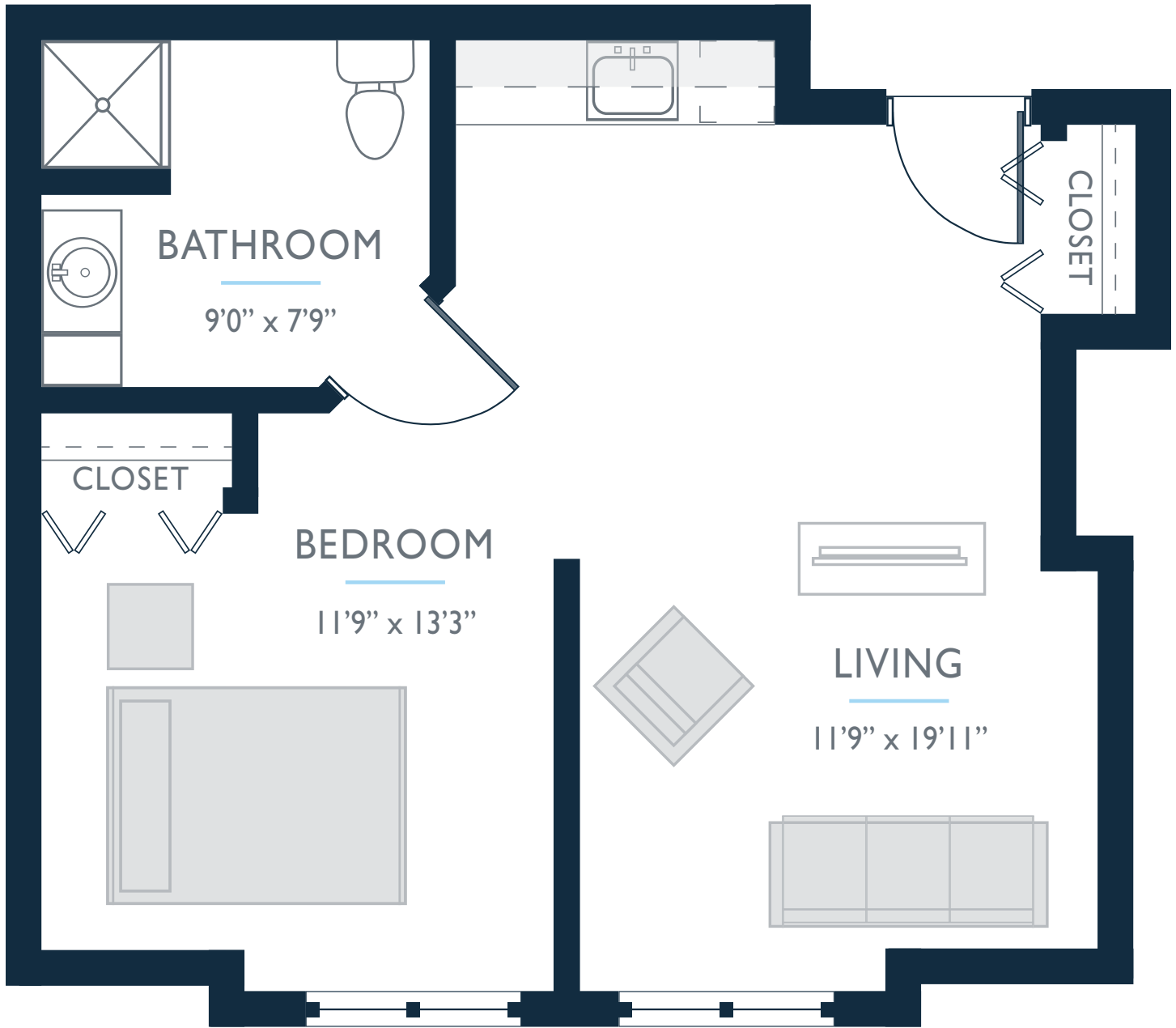


# MEMORY CARE SUITES

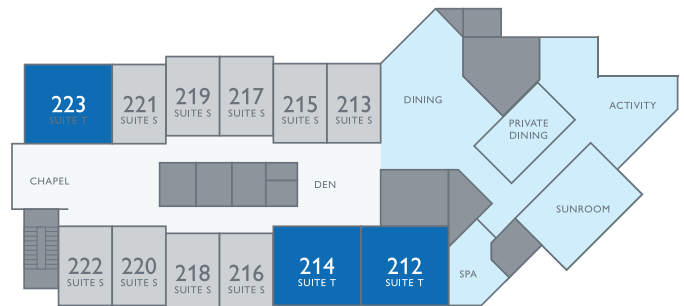
SUITE T | 1 BED / 1 BATH / KITCHENETTE | 532-542 SQ



FIND YOUR *Home* HERE

212 | 214 | 223

GracePOINTE  
by TABITHA



# GracePOINTE

Assisted Living | Memory Care Suites

by  TABITHA

*GracePointe offers a maintenance-free lifestyle, around-the-clock personal care, enriching activities focused on health and wellness, and leading-edge technology.*

*For older adults experiencing dementia-related memory loss or have cognitive support needs, GracePointe provides all the richness of living in a safe environment you can trust.*

## ENJOY:

- Daily chef-inspired meals
- Community dining rooms
- Physical, social, creative & spiritual activities
- Outdoor patios and walking paths
- In-house beauty salon and barbershop
- Weekly light housekeeping, laundry and linen changes
- 24-hour staffing
- Transportation to local medical visits

## SERVICES INCLUDE:

- Escorting to/from meals, activities and events
- Dressing assistance as needed
- TED hose assistance
- Grooming assistance as needed
- Bathroom (toileting) assistance as needed
- Bath or shower assistance up to two times weekly
- Simple medication management and administration
- Daily diabetic management
- Secure environment with safety monitoring technology



GP\_SLK\_0031\_230517\_P